

# 2023 | PTZ Camera Lineup



MODEL	AW-UE4	AW-HE20	AW-UE20	AW-UE40	AW-UE50	AW-UE80	AW-UE100	AW-HE145	AW-UE150	AW-UE160	AW-UR100
Series	Pro	Pro	Pro	Premium	Premium	Premium	Platinum	Platinum	Platinum	Platinum	Outdoor
Format	4K/30p	Full HD	4K/30p	4K/30p	4K/30p	4K/60p	4K/60p	Full HD	4K/60p	4K/60p	4K/60p
Color	Black (K) or White (W)	Black (K) or White (W)	Black (K) or White (W)	Black (K) or White (W)	Black (K) or White (W)	Black (K) or White (W)	Black (K) or White (W)	Black (K) or White (W)	Black (K) or White (W)	Black (K) or White (W)	Silver
GENERAL											
Sensor	1/2.5" MOS	1/2.8" x 1MOS	1/2.8" x 1MOS	1/2.5"-type x 1MOS	1/2.5"-type x 1MOS	1/2.5"-type x 1MOS	1/2.5" MOS	1" MOS	1" MOS	1-type (1") 4K MOS	1/2.5" 4K MOSx1
Optical Zoom	—	12x	12x	24x	24x	24x	24x	20x	20x	20x	24x
i.Zoom	—	UHD 1.33x, FHD 1.33x	UHD 1.33x, FHD 1.33x	28x UHD, 36x FHD	28x UHD, 36x FHD	28x UHD, 36x FHD	28x UHD, 36x FHD	24x UHD, 32x FHD	24x UHD, 32x FHD	24x UHD, 32x FHD	28x UHD, 36x FHD
Digital Zoom	4x	1.4x, 2x	1.4x, 2x	1.4x, 2x	1.4x, 2x	1.4x, 2x	10x	10x	10x	10x	10x
FOV (Horizontal)	111°	71°	71°	74.1°	74.1°	74.1°	74.1° (W) / 3.3° (T)	75.1° (W) / 4.0° (T)	75.1° (W) / 4.0° (T)	75.1° (W) / 4.0° (T)	74.1°
Focus	Auto/Manual	Auto/Manual, OTAF	Auto/Manual, OTAF	Auto/Manual, OTAF	Auto/Manual, OTAF	Auto/Manual, OTAF	Auto/Manual, OTAF	Auto/Manual, OTAF	Auto/Manual, OTAF	Auto/Manual, OTAF	Auto/Manual, OTAF
Minimum Illumination	4 lx*	—	—	3 lx (F1.8, 59.94p, 50IRE, 42dB, without accumulation)	3 lx (F1.8, 59.94p, 50IRE, 42dB, without accumulation)	3 lx (F1.8, 59.94p, 50IRE, 42dB, without accumulation)	3 lx*	2 lx*	2 lx*	2 lx*	3 lx*
Gain	0 dB to 42 dB	Auto, 0 to 42 dB	Auto, 0 to 42 dB	Auto, 0 dB to 36 dB (Super gain: 37 dB to 42 dB)	Auto, 0 dB to 36 dB (Super gain: 37 dB to 42 dB)	Auto, 0 dB to 36 dB (Super gain: 37 dB to 42 dB)	0 dB to 36 dB (Super Gain +37dB - +42dB)	0 dB to 36 dB	0 dB to 36 dB	Auto, -6 dB to 36 dB	Auto, 0 dB - 36 dB (1dB Step)
Control	IP, IR	IP, IR, RS422, RS232	IP, IR, RS422, RS232	IP, IR, RS422	IP, IR, RS422	IP, IR, RS422	IP, IR, RS422	IP, IR, RS422	IP, IR, RS422	IP, IR, RS422	IP, IR, RS422
Power	PoE or USB	with included power supply, POE+	with included power supply, POE+	with included power supply, POE+	with included power supply, POE+	with included power supply, POE+	with included power supply, POE++	PoE++ or XLR	PoE++ or XLR	PoE++ 802.3bt type 4 or XLR	POE++ or DC12V
Installation	Tripod, Wall, Ceiling	Tripod, Wall, Ceiling	Tripod, Wall, Ceiling	Tripod, Wall, Ceiling	Tripod, Wall, Ceiling	Tripod, Wall, Ceiling	Tripod, Wall, Ceiling	Tripod, Wall, Ceiling	Tripod, Wall, Ceiling	Tripod, Wall, Ceiling	Wall, Ceiling
Mount Position	Ceiling or Desktop	Ceiling or Desktop	Ceiling or Desktop	Ceiling or Desktop	Ceiling or Desktop	Ceiling or Desktop	Ceiling or Desktop	Ceiling or Desktop	Ceiling or Desktop	Ceiling or Desktop	Ceiling or Desktop
PTZ											
Pan Range	±175° (manual)	±170°	±170°	±175°	±175°	±175°	±175°	±175°	±175°	±175°	±175°
Tilt Range	±25° (manual)	-30° to 90°	-30° to 90°	-30° to 90°	-30° to 90°	-30° to 90°	-30 to 210°	-30 to 210°	-30 to 210°	-30 to 210°	-30 to 210°
Pan/Tilt Speed	—	TBD	TBD	Up to 180 deg/sec	Up to 180 deg/sec	Up to 180 deg/sec	±175°/-30° - +210°	~180°/s	~180°/s	~180°/s	~180°/s
Operation Noise	—	NC40 or less	NC40 or less	NC25 or less	NC25 or less	NC25 or less	NC35 or Less	NC35 or Less	NC35 or Less	NC35 or Less	NC45 or Less
VIDEO OUTPUT											
LAN	H.264, RTSP, RTMP/S, MJPEG	H.264, HEVC, RTMP/S, MJPEG	H.264, HEVC, RTMP/S, MJPEG	H.264, HEVC, RTSP, RTMP/S, SRT, NDI HX V2, MPEG2-TS over UDP, MJPEG	H.264, HEVC, RTSP, RTMP/S, SRT, NDI HX V2, MPEG2-TS over UDP, MJPEG	H.264, HEVC, RTSP, RTMP/S, SRT, High Bandwidth NDI, NDI HX V2, MPEG2-TS over UDP, MJPEG	H.264, HEVC, RTSP, RTMP/S, SRT, High Bandwidth NDI, NDI HX V2, MPEG2-TS over UDP, MJPEG	H.264, HEVC, RTSP, RTMP/S, SRT, NDI HX V2, MPEG2-TS over UDP, MJPEG	H.264, HEVC, RTSP, RTMP/S, SRT, NDI HX V2, MPEG2-TS over UDP, MJPEG	H.264, HEVC, RTSP, RTMP/S, SRT, High Bandwidth NDI, NDI HX V2, MPEG2-TS over UDP, MJPEG	H.264, HEVC, RTSP, RTMP/S, SRT, High Bandwidth NDI, NDI HX V2, MPEG2-TS over UDP, MJPEG
NDI	—	—	—	NDI HX Upgradable	NDI HX Upgradable	Full NDI / NDI HX Included	High Bandwidth up to 4K 60, NDI HX Included	NDI HX Upgradable	NDI HX Upgradable	High Bandwidth up to 4K 60, NDI HX Included	High Bandwidth up to 4K 60, NDI HX Included
Optical Fiber	—	—	—	—	—	—	—	—	Yes**	Yes**	Yes**
12G-SDI	—	—	—	—	—	—	Yes	—	Yes	Yes	Yes
3G-SDI	—	Yes	Yes	—	Yes	Yes	Yes	Yes	Yes	Yes	Yes
HDMI	Yes	Yes	Yes	Yes	Yes	Yes	Yes	Yes	Yes	Yes	—
USB / UVC	Yes	Yes	Yes	Yes	Yes	—	—	—	—	—	—
SFP+	—	—	—	—	—	—	—	—	12G SDI	12G SDI or ST2110/ Network* Requires SFU60 for ST2110/ Network operation	SFP+ compliant (Single Fiber)*
CONTROL											
Browser (PC/Mac/Mobile via IP)	Yes	Yes	Yes	Yes	Yes	Yes	Yes	Yes	Yes	Yes	Yes
Serial	—	RS-232/RS-422	RS-232/RS-422	RS-422	RS-422	RS-422	RS-422	RS-422	RS-422	RS-422	RS-422
USB Virtual Driver	Yes	Yes	Yes	Yes	Yes	Yes	Yes	Yes	Yes	Yes	Yes
Auto Tracking*/ Auto Tracking Server*	AW-SF100 / AW-SF200	—	—	AW-SF100 / AW-SF200	AW-SF100 / AW-SF200	AW-SF100 / AW-SF200	AW-SF100 / AW-SF200	AW-SF100 / AW-SF200	AW-SF100 / AW-SF200	AW-SF100 / AW-SF200	—
IR Remote Control	AW-RM50	AW-RM50	AW-RM50	AW-RM50	AW-RM50	AW-RM50	AW-RM50	AW-RM50	AW-RM50	AW-RM50	—
Compact Controller	AW-RP60	AW-RP60	AW-RP60	AW-RP60	AW-RP60	AW-RP60	AW-RP60	AW-RP60	AW-RP60	AW-RP60	AW-RP60
Full-Size Controller	AW-RP150	AW-RP150	AW-RP150	AW-RP150	AW-RP150	AW-RP150	AW-RP150	AW-RP150	AW-RP150	AW-RP150	AW-RP150
Remote Operation Panel	—	—	—	AK-HRP1000*, AK-HRP1005*, AK-HRP1015, AK-HRP250*, AK-HRP1010*	AK-HRP1000*, AK-HRP1005*, AK-HRP1015, AK-HRP250*, AK-HRP1010*	AK-HRP1000*, AK-HRP1005*, AK-HRP1015, AK-HRP250*, AK-HRP1010*	AK-HRP1000*, AK-HRP1005*, AK-HRP1015, AK-HRP250*, AK-HRP1010*	AK-HRP1000*, AK-HRP1005*, AK-HRP1015, AK-HRP250*, AK-HRP1010*	AK-HRP1000*, AK-HRP1005*, AK-HRP1015, AK-HRP250*, AK-HRP1010*	AK-HRP1000*, AK-HRP1005*, AK-HRP1015, AK-HRP250*, AK-HRP1010*	AK-HRP1010*, AK-HRP1015*, AK-HRP250*
Software Controller (Windows)	PTZ Control Center, AW-SF300	PTZ Control Center, AW-SF300	PTZ Control Center, AW-SF300	PTZ Control Center, AW-SF300	PTZ Control Center, AW-SF300	PTZ Control Center, AW-SF300	PTZ Control Center, AW-SF300	PTZ Control Center, AW-SF300	PTZ Control Center, AW-SF300	PTZ Control Center, AW-SF300	PTZ Control Center, AW-SF300
SFP+	—	—	—	—	—	—	—	—	—	ST2110/ Network* Requires SFU60	12G SDI
Wireless	—	—	—	—	—	—	—	—	—	Over USB 3.0 Host	—
FEATURES											
IP Live Preview / Output	Yes	Yes	Yes	Yes	Yes	Yes	Yes	Yes	Yes	Yes	Yes
Image Stabilization	—	EIS	EIS	OIS	OIS	OIS	OIS	OIS	OIS	OIS 2 axis + hybrid	OIS/EIS/DISS
Night Mode (for IR)	—	—	—	—	—	Yes	Yes	Yes	Yes	Yes	Yes
Dynamic Range Stretch (DRS)	Yes	Yes	Yes	Yes	Yes	Yes	Yes	Yes	Yes	Yes	Yes
Audio Input / Embedding	Yes	Yes	Yes	Yes	Yes	Yes	Yes	Yes	Yes	Dual XLR up to 256 Kb bitrate	D-SUB / Yes
Color Temperature Adjustment	Yes	Yes	Yes	Yes	Yes	Yes	Yes	Yes	Yes	Yes	Yes
Presets	Up to 100	Up to 100	Up to 100	Up to 100	Up to 100	Up to 100	Up to 100	Up to 100	Up to 100	Up to 100	Up to 100
High Dynamic Range (HDR)	—	—	—	—	—	—	—	(HLG)	(HLG)	Yes	—
Streaming Protocols	H.264, RTSP, RTMP/S, MJPEG	H.264, HEVC, RTMP/S, MJPEG	H.264, HEVC, RTMP/S, MJPEG	H.264, HEVC, RTSP, RTMP/S, SRT, NDI HX V2, MPEG2-TS over UDP, MJPEG	H.264, HEVC, RTSP, RTMP/S, SRT, NDI HX V2, MPEG2-TS over UDP, MJPEG	H.264, HEVC, RTSP, RTMP/S, SRT, High Bandwidth NDI, NDI HX V2, MPEG2-TS over UDP, MJPEG	H.264, HEVC, RTSP, RTMP/S, SRT, High Bandwidth NDI, NDI HX V2, MPEG2-TS over UDP, MJPEG	H.264, HEVC, RTSP, RTMP/S, SRT, NDI HX V2, MPEG2-TS over UDP, MJPEG	H.264, HEVC, RTSP, RTMP/S, SRT, NDI HX V2, MPEG2-TS over UDP, MJPEG	H.264, HEVC, RTSP, RTMP/S, SRT, High Bandwidth NDI, NDI HX V2, MPEG2-TS over UDP, MJPEG	H.264, HEVC, RTSP, RTMP/S, SRT, High Bandwidth NDI, NDI HX V2, MPEG2-TS over UDP, MJPEG
Web Protocols	HTTP	HTTP	HTTP	HTTP, HTTPS, NTP, mDNS, SNMP, TLS5.0, 802.1x	HTTP, HTTPS, NTP, mDNS, SNMP, TLS5.0, 802.1x	HTTP, HTTPS, NTP, mDNS, SNMP, TLS5.0, 802.1x	HTTP, HTTPS, NTP, mDNS, SNMP, TLS5.0	HTTP, HTTPS, NTP, mDNS, SNMP, TLS5.0	HTTP, HTTPS, NTP, mDNS, SNMP, TLS5.0	HTTP, HTTPS, NTP, mDNS, SNMP, TLS5.0, 802.1x	HTTP, HTTPS, NTP, mDNS, SNMP, TLS5.0
Direct Drive System	—	—	—	Yes	Yes	Yes	Yes	—	—	—	—
Fanless Design	Yes	—	—	Yes	Yes	—	—	—	—	—	—
Built-In ND Filters	—	—	—	—	—	1/4, 1/16, 1/64	1/4, 1/16, 1/64	1/4, 1/16, 1/64	1/4, 1/16, 1/64	1/4, 1/16, 1/64	1/4, 1/16, 1/64
Genlock	—	—	—	—	—	Tri-level, BB	Tri-level, BB	Tri-level, BB	Tri-level, BB	Tri-level, BB, or PTP* *PTP requires SFU60 license	Tri-level, BB
Advanced Color Adjustment	—	—	—	Yes	Yes	Yes	Yes	Yes	Yes	HDR Paint	Yes
Digital Noise Reduction (DNR)	Yes	Yes	Yes	Yes	Yes	Yes	Yes	Yes	Yes	Yes	Yes
Position Tracking for AR/VR	—	—	—	—	—	(FreeD)	(FreeD)	—	(FreeD)	(FreeD)	(FreeD)
HD Cropping in 4K Mode	—	—	—	—	—	—	Yes	—	Yes	Yes (Cropping Zoom available)	Yes
High-Speed Pan/Tilt Mode	—	—	—	Yes	Yes	Yes	Yes	Yes	Yes	Yes	Yes
V-LOG Support	—	—	—	—	—	—	—	—	Yes	Yes	—
SMPT2110 I/O*	—	—	—	—	—	—	—	—	—	Video, Audio, Return Video, PTP Synchron, Requires SFU60 License Key*, Requires SFP+ (up to 10Gbps for video up to 1080p 60)	—
USB Host for tethering	—	—	—	—	—	—	—	—	—	Yes	—
Auto Focus	Standard	Standard	Standard	Standard	Standard	Standard	Standard	Standard	Standard	Phase Detection AF	Standard
OPTIONS & ACCESSORIES											
Wall Mount (Black) / Wall Mount (White)	FEC-4WMK/ FEC-4WMW	FEC-40WMW/ FEC-40WMK	FEC-40WMW/ FEC-40WMK	FEC-40WMW/ FEC-40WMK	FEC-40WMW/ FEC-40WMK	FEC-40WMW/ FEC-40WMK	FEC-100WMW/ FEC-100WMK	FEC-150GMW/ FEC-150GMK	FEC-150GMW/ FEC-150GMK	FEC-160GMW/ FEC-160GMK	FEC-HR140WMRBB
Ceiling Mount	Included	Included	Included	Included	Included	Included	Included	Included	Included	Included	Built-in
5 Year Warranty + Accident Protection	AV-SVCEXTWAR5YB	AV-SVCEXTWAR5YB	AV-SVCEXTWAR5YB	AV-SVCEXTWAR5YB	AV-SVCEXTWAR5YB	AV-SVCEXTWAR5YB	AV-SVCEXTWAR5YC	AV-SVCEXTWAR5YB	AV-SVCEXTWAR5YB	AV-SVCEXTWAR5YB	AV-SVCEXTWAR5YB
On-Site Training	AV-SVCSRENGFDS	AV-SVCSRENGFDS	AV-SVCSRENGFDS	AV-SVCSRENGFDS	AV-SVCSRENGFDS	AV-SVCSRENGFDS	AV-SVCSRENGFDS	AV-SVCSRENGFDS	AV-SVCSRENGFDS	AV-SVCSRENGFDS	AV-SVCSRENGFDS
MSRP (BASE)	\$1,200	\$1,495	\$1,895	\$3,305	\$3,835	\$6,145	\$8,350	\$11,025	\$11,400	\$14,995	\$13,500

\*At 59.94p; F No. (at WIDE & OPEN); MAX Gain; Chart is Gray Scale Test Chart (reflectance = 89.9 %); and Luminance Level at the white filed is 50IRE.  
 \*\*SFP+ module purchased separately. Please reference brochure for recommended models.  
 \*\*\*AK-HRP1015 firmware upgrade may be required.  
 \*Power supply not included with this model. NDI is a registered trademark of NewTek, Inc.  
 \*Paid license key required for SMPT2110.

## FULL-SIZE CONTROLLER

### AW-RP150

Control up to 200 PRO PTZ cameras with this full-size camera controller. Quickly setup and access camera presets and complex image controls and easily control your cameras with a top-of-the-line joystick, ensuring smooth camera movements.

- Large 7" LCD Touchscreen w/Touch Focus Functionality
- Camera Monitoring via HD-SDI
- Industry Approved Ergonomic Design
- 3D Joystick for Single-Handed Operation
- Simplified PTZ Camera Presets & Tracing Memory
- Streamlined Multicamera Deployment
- Power via PoE+ or XLR<sup>1</sup>



## COMPACT CONTROLLER

### AW-RP60

Control up to 200 PRO PTZ cameras, with this full-featured controller. A 3.5" LCD screen displays menus & key camera information such as iris, zoom and focus. Easily manage 100 PTZ presets.

Power via PoE+ or XLR<sup>1</sup>

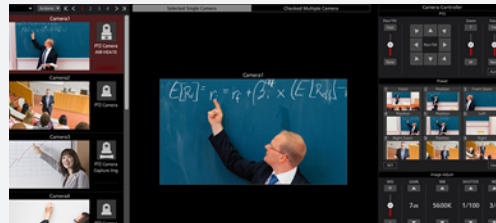


## NEW UPDATES! WINDOWS SOFTWARE

### PTZ Control Center

Use the free PTZ Control Center software to set-up and control your camera on a Windows laptop or desktop PC. With this software, you can utilize your mouse, your touch-screen, or your choice of compatible joysticks or game controllers for camera control.

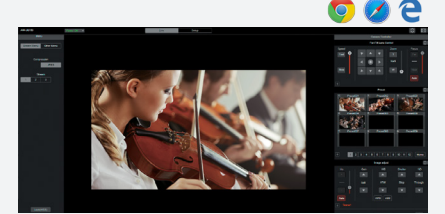
- Software application that allows for remote operation of Panasonic Professional PTZ cameras via your PC, allowing for control via a standard keyboard/mouse, touchscreen, or a compatible USB joystick / game controller
- Allows for centralized management of multiple PTZ cameras
- Provides simultaneous control of multiple cameras, allowing adjustment of Focus, Iris, Gain, White Balance, Shutter & ND Filters
- Add up to 9 camera presets with thumbnails



Works on Windows 7, Windows 8.1 & Windows 10

## BUILT-IN WEB BROWSER

When your camera is on the network, you can set-up and control it via a web browser on a PC, Mac or mobile device such as an iPhone, iPad or Android device. This is a free, yet powerful option for camera control and setup.



## AUTO TRACKING SOFTWARE / SERVER

### AW-SF100 / AW-SF200

State-of-the-art auto tracking software options for Panasonic PTZ remote cameras. Dramatically simplifies your remote camera for easier single-person operation. Using a combination of tracking methods, including template matching, facial detection and deep learning, compatible Panasonic PTZ cameras can be automated to keep track of speakers or lecturers without the need for a dedicated camera operator.

- AW-SF100 (stand-alone software) / AW-SF200 (server)



Works on Windows 7, Windows 8.1 & Windows 10

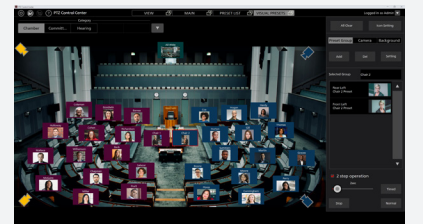
## NEW

## VISUAL PRESET SOFTWARE

### AW-SF300

AW-SF300 enables the management and control of visual presets through an intuitive GUI interface incorporating photos and layout diagrams assigned by the user. Simply set your presets, then touch the area on screen to move the selected cameras to that area. When integrated with Panasonic Connect audio solutions, the AW-SF300 can preset speakers or important subjects in any environment.

**NEW! Voice-triggered presets with Panasonic wireless microphones!**



## REMOTE OPERATION PANEL

### AK-HRP250 / AK-HRP1015

Ideal for multi-camera shoots that incorporate PTZ and non-PTZ cameras, these advanced remote control panels allow for accelerated fine-tuning of camera color and shading.



## Robotic Camera System

The first robotic system with tracks to be fully integrated with Panasonic PTZ cameras. The direct system integration allows for full control of the dolly, column and the camera from a single controller.



## Easy IP Setup Tool Plus

Easy IP Setup Tool Plus is a piece of freeware that enables the centralized management of a range of network settings and firmware updates exclusively for Panasonic PTZ Cameras. It supports efficient camera setup and operation in a range of situations where multiple cameras are used, including during installation work and setup for events.

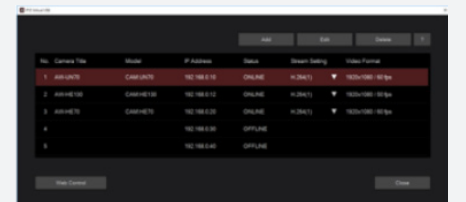


## DRIVER SOFTWARE

### PTZ Virtual USB Driver

With the free PTZ Virtual USB Driver software, you can convert select Panasonic PTZ cameras on your network into super web cams.

- Allows you to use select Panasonic professional PTZ cameras on your network as USB cameras
- Up to 5 cameras can be registered
- Automatic camera discovery and network settings
- Compatible with all PTZ models as well as the AG-UMR20, AG-UCK20, AG-CX10 and AG-CX350.



Works on Windows 7, Windows 8.1 & Windows 10