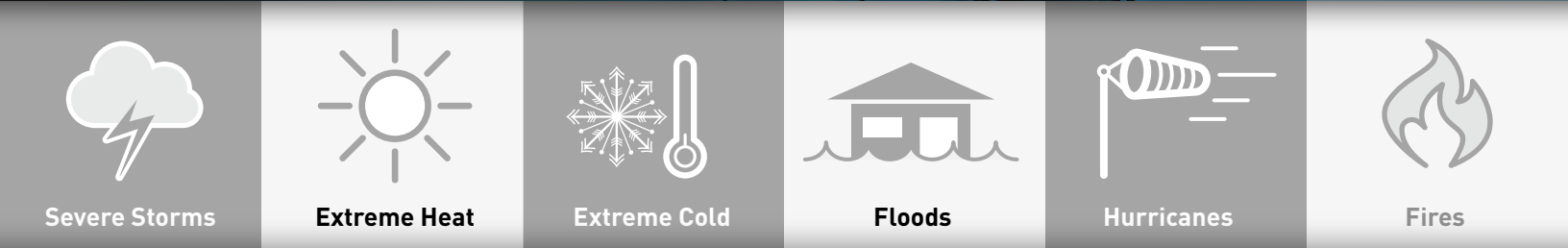


TOUGHBOOK®

IN THE ENERGY AND UTILITY INDUSTRY, SEVERE WEATHER AND DISASTERS COME WITH THE JOB.



\$165 BILLION

weather disaster losses in 2022¹

78%

increased weather-related outages²

5.5 MILLION

miles of electrical distribution lines³



Panasonic TOUGHBOOK® rugged mobile solutions give crews access to the information they need to respond quickly to unexpected service outages and reduce restoration time.



Millions of customers rely on utilities to live, work and play.

WHEN UNEXPECTED OUTAGES OCCUR, HOW DOES MOBILE TECHNOLOGY HELP?

- Locate outages via maps and geographic information system (GIS) data
- Dispatch resources efficiently using electronic work orders
- Provide crews with real-time information, such as digital maps of infrastructure
- Collect and transmit accurate field data efficiently
- Post-project/incident reporting
- Improve customer satisfaction



What to look for in mobile technology



Rugged enough to withstand harsh weather conditions including rain, snow and ice



Reliable, with the lowest failure rate in the industry⁴



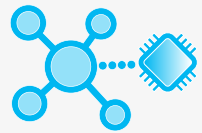
Easy to use, with high-visibility displays and industry-leading long battery life



User-friendly and familiar operation for getting workers up and running quickly



Available deployment services to augment IT resources for fast deployment



Exceptional connectivity and reach; ready for FirstNet® or Verizon public safety networks



Panasonic mobile solutions combine TOUGHBOOK rugged devices with software, connectivity and services to help utility providers restore services quickly.



LEARN MORE ABOUT HOW PANASONIC CAN IMPROVE UTILITY OPERATIONS ▶

TOUGHBOOK.com | TOUGHBOOK@us.panasonic.com | 1.888.245.6344

Panasonic CONNECT

© 2023 Panasonic Connect North America. All rights reserved.

1. 2022 U.S. billion-dollar weather and climate disasters in historical context. NOAA Climate.gov (January 10, 2023) ▶
 2. Get ready: More blackouts are coming. Business Insider (March 23, 2023) ▶
 3. Smart Grid System Report 2020. U.S. Department of Energy (January 2022) ▶
 4. Compares Panasonic actual data for TOUGHBOOK computers to data gathered by IDC on consumer and rugged device and reported in The Case for Deploying Rugged Devices in Your Organization. IDC (November 2021) ▶