

STREAMLINE DEVICE DEPLOYMENT

WE FOCUS ON TECHNOLOGY SO YOU CAN FOCUS ON YOUR JOB

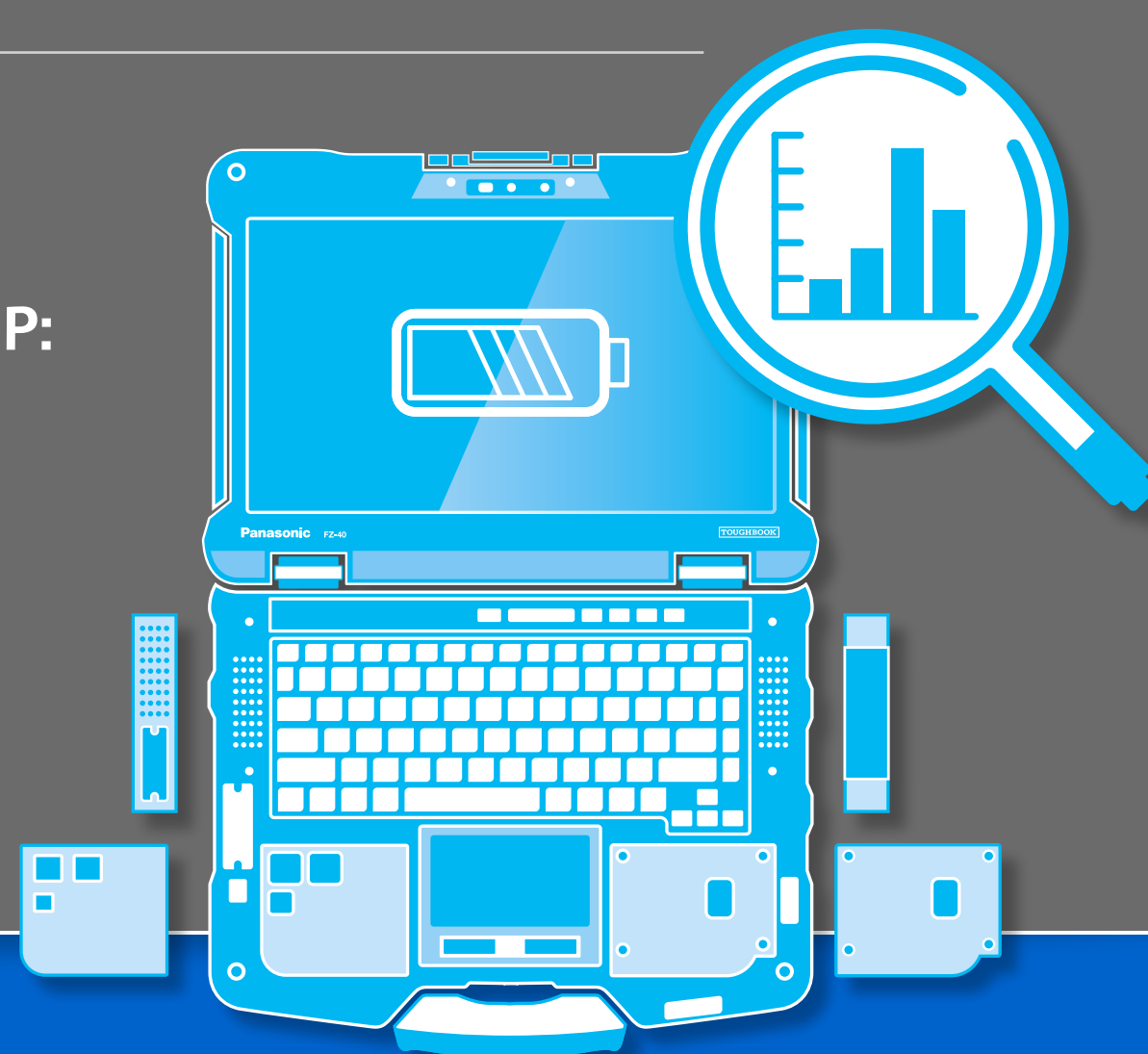


Ensuring that mobile devices for firefighters and EMS technicians are operating properly in the field starts with seamless, rapid-access deployment from the IT office. Panasonic Connect ProServices can help boost your limited resources. Preinstalled management software maintains TOUGHBOOK® devices right from the start, and our value-added services streamline the deployment process—getting mission-critical devices into the hands of workers who need them most.

ONE SIZE DOES NOT FIT ALL

SEE HOW CUSTOMIZED DEPLOYMENT SERVICES CAN HELP:

- Take stress off internal IT departments.
- Deliver tailored, prepackaged device solutions.
- Ensure that devices are installed properly.
- Have products ready for work straight out of the box.



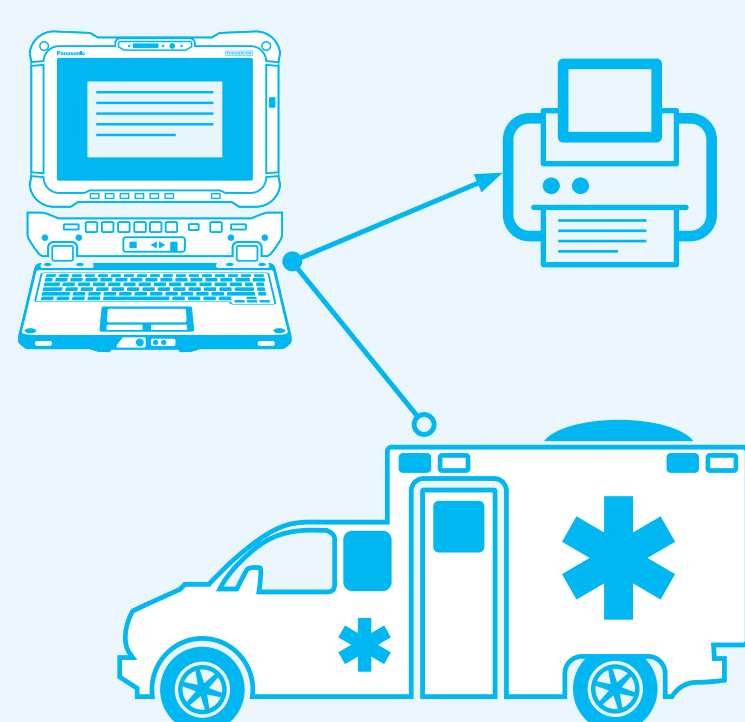
SERVICES

Panasonic Connect's fully customizable package of device solutions helps you streamline fulfillment, installation and troubleshooting, monitoring, and repair services.



Fulfillment

- Warehousing spare devices & parts
- Image management
- Device configuration, setting up security options and software installation (including BIOS customization)
- Kitting with configured/software-installed devices, SIM card installations, carrier activations and third-party accessories



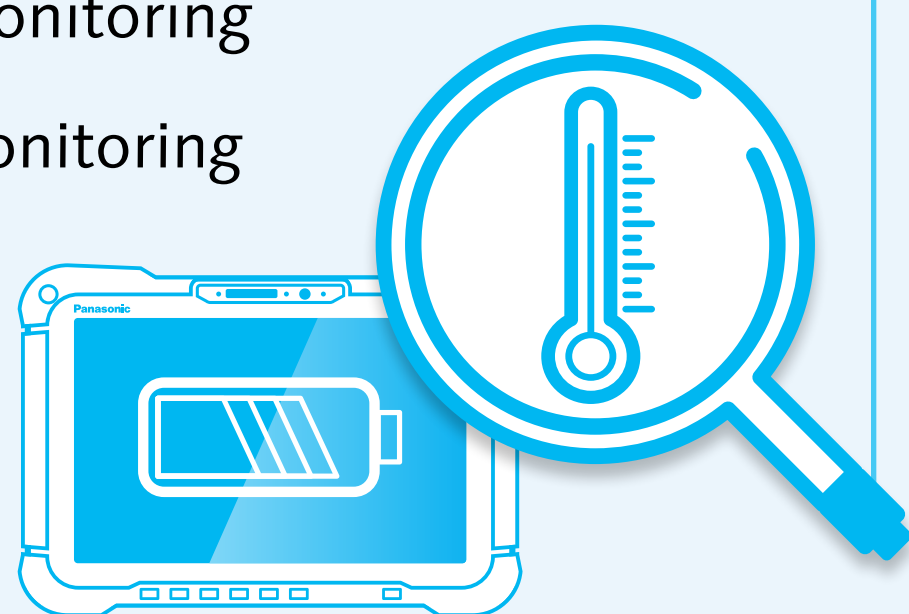
Installation and troubleshooting

- Customized vehicle mounting solutions for safe, secure and ergonomic use
- External wireless routers and antennas for connected vehicles
- Installation of third-party accessories like mobile printers
- Direct service hotline to help troubleshoot any issues
- Third-party component testing and integration

Monitoring

Smart Essentials helps you monitor your mission-critical devices in real time and manage them proactively to maximize productivity with:

- Smart Service Data Analytics
- Smart Battery Monitoring
- Smart Device Monitoring

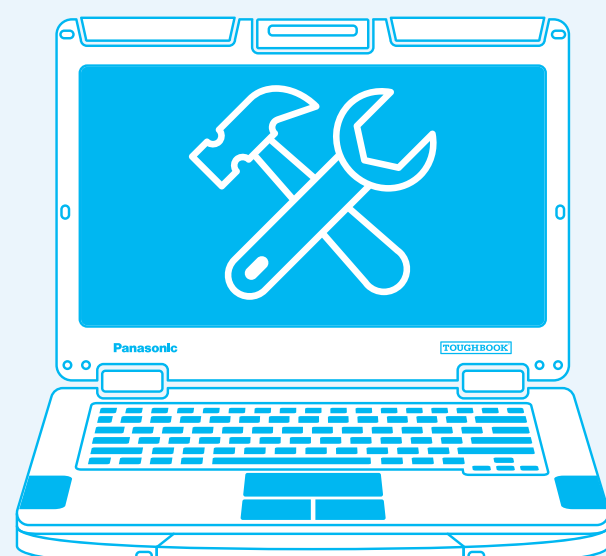


CORE is an embedded service on TOUGHBOOK devices provided at no additional cost to agencies that simplifies IT asset management by:

- Monitoring warranty, repair and maintenance schedules
- Providing alerts
- Showing user profiles
- Displaying an overview of all products on a single pane of glass

Repair services

- Rugged devices backed by the strongest warranties in the business
- U.S.-based, 24x7 service and repair center
- Disk image management for seamless returns after repair
- Prompt repair or device replacement provided by Panasonic Connect ProServices



The ProServices team helps you plan, test, deploy, manage and maintain your TOUGHBOOK mobile solutions with customized services that cover the life cycle of your devices—from initial consultation, installation and management to industry-leading warranty and 24x7 repair.



LEARN MORE ABOUT DEVICE DEPLOYMENT FOR FIREFIGHTING AND EMERGENCY MEDICAL SERVICES

TOUGHBOOK.com

toughbook@us.panasonic.com

1.888.245.6344