

Ceiling mount bracket for high ceilings

Description

This ceiling mount bracket is used when mounting a Panasonic's applicable projector to high ceilings.

Specifications	Vertical correction angle:	+5°, -17°
	Horizontal slant correction angle:	±2.5°
	Horizontal turn correction angle:	±1.2°
	Dimensions (W × H × D):	384 × 340-420 × 447 mm (15-1/8 × 13-3/8-16-17/32 × 17-19/32 inches)
	Weight*:	Approximately 10.1 kg (22.3 lbs)
	Applicable projector:	PT-DZ13K/DS12K/DW11K/DZ10K/DZ8700/DS8500/ DW8300/DZ110X/DS100X/DW90X
		* Average value. May differ depending on the actual unit.

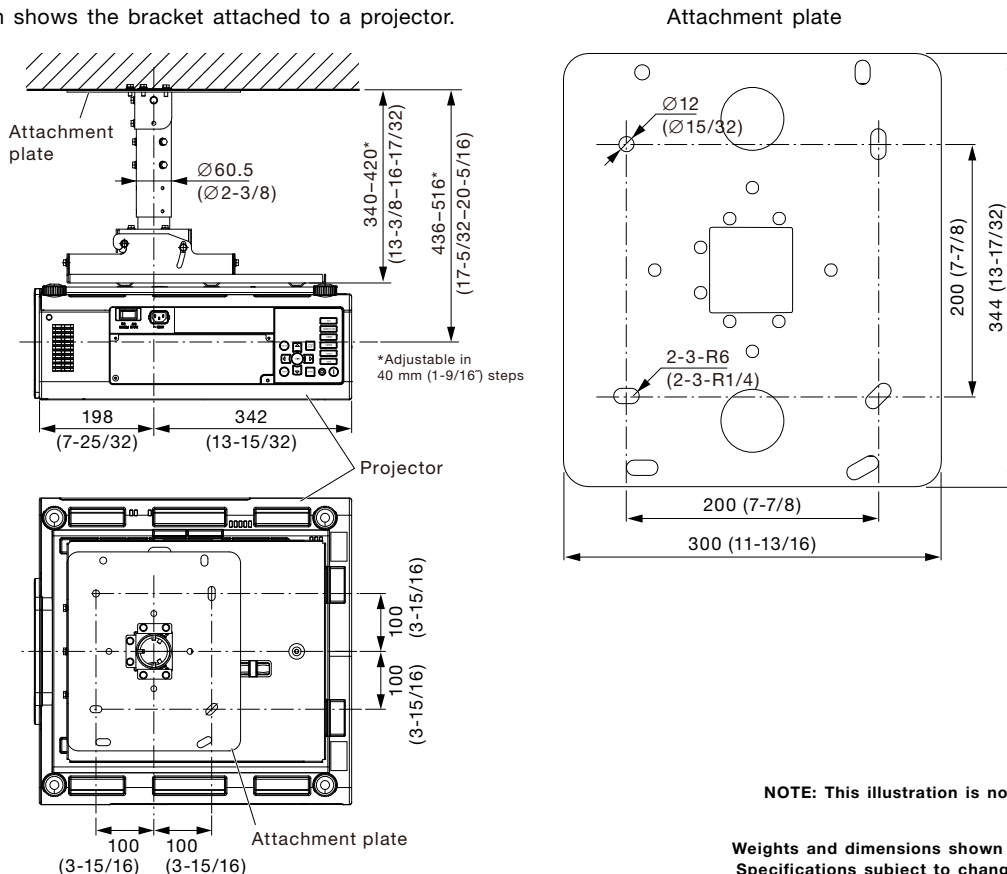
Parts	Attachment plate	1	Washer-fitted hexagonal bolts (M6 × 80)	2
	Projector mount bracket	1	Washer-fitted hexagonal bolts (M6 × 16)	35
	Adjuster pole A	1	Washers (M6)	2
	Adjuster pole B	1	Spring washers (M6)	2
	Angle adjuster	1	Hexagonal nuts (M6)	2
	Pole support bracket 1	1	Sealling packing	1
	Pole support bracket 2	1	Drop prevention kits	2
	Pole base	1		

Caution:

- Mounting should be done by a qualified technician.
- Make sure that the mounting (ceiling) area has sufficient strength.
- Read the enclosed mounting instructions thoroughly before starting.
- Do not use an electric screwdriver or impact driver to tighten screws. Use a torque driver or hexagon torque wrench and tighten screws to the torque specified in the instructions.
- When the product is no longer going to be used, have it disposed of quickly by a professional disposal service.

Dimensions

Illustration shows the bracket attached to a projector.



unit : mm (inch)
NOTE: This illustration is not drawn to scale.

Weights and dimensions shown are approximate. Specifications subject to change without notice.