

SECTION 5

EXPLODED VIEWS & REPLACEMENT PARTS LIST

Model No. : **AV-HS6000 series**

Note:


1. * Be sure to make your orders of replacement parts according to this list.
2. Unless otherwise specified, all resistors are in OHMS, K=1,000 OHMS, all capacitors are in MICROFARADS (uF), P=uuF.
3. The P.C.Board unit marked with "■" shown below the main assembled parts.
4. The parts marked with ⊕ on the exploded view show the electric parts.
5. IMPORTANT SAFETY NOTICE
Components identified with mark △ have the special characteristics for safety. When replacing any of these components, use only the same type.
6. The marking (RTL) indicates the retention time is limited for this item.
7. "M" in Remark column indicates needed in the periodical maintenance

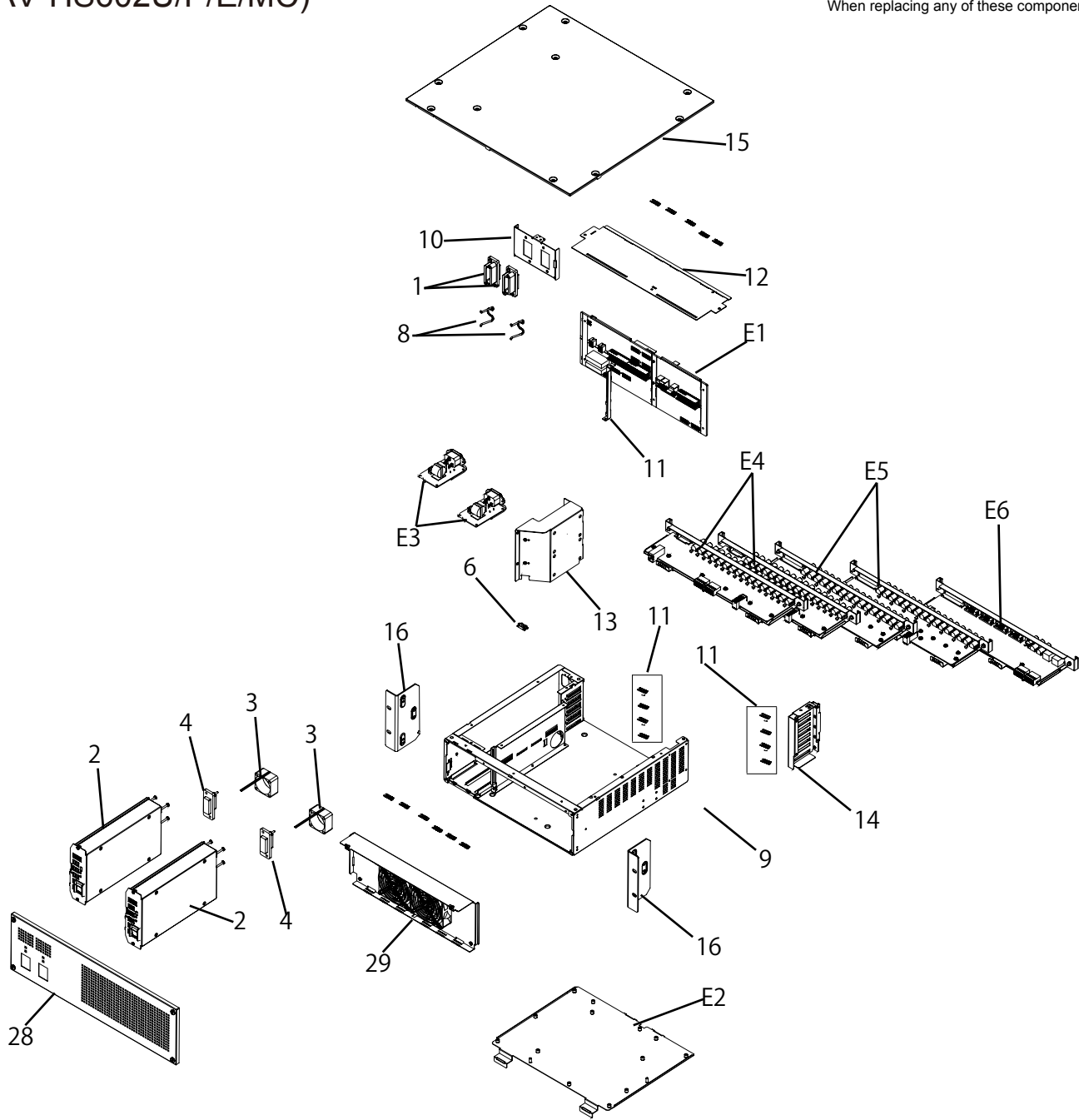
CONTENTS

FRAME PARTS ASSEMBLY(AV-HS60U1/P/E/MC , AV-HS60U2/P/E/MC)	SPL-1
FRAME PARTS ASSEMBLY(AV-HS60C1/P/E/MC, AV-HS60C2/P/E/MC)	SPL-3
FRAME PARTS ASSEMBLY (AV-HS60C3G/MC)	SPL-6

FRAME PARTS ASSEMBLY

(AV-HS601U/P/E/MC, AV-HS602U/P/E/MC)

Components identified with the mark  have the special characteristics for safety. When replacing any of these components, use only the same type.



SPL-1

Ref.No.	Part No.	Part Name & Description	Pcs	Remarks
1	VEE1004	CABLE POWER	2	
2	VEKOV24	POWER U	1	
3	L6FZY00003	DC FAN MOTOR	1	
4	VEE1005	MAIN FRAME CABLE	1	
5	VGH5387	MAIN FRAME LABEL	1	
6	VJF1601	EDGE HOLDER	1	
7	VMC2269	SHIELD FINGER M	11	
8	VML3932	AC CORD HOOK	2	
9	VMPOJ11	BOTTOM PLATE	1	
10	VMPOJ12	PS CN PLATE	1	
11	VMPOJ14	MOTHER SUPPORT PLATE	1	
12	VMPOJ15	MOTHER TOP PLATE	1	
13	VMPOJ16	NF PLATE	1	
14	VMPOJ17	REAR PCB RAIL R	1	
15	VMPOJ18	TOP PANEL	1	
16	VMPOJ19	RACKMOUNT BRACKET	2	
17	VMPOJ46	PS BLANK PANEL	1	FOR AV-HS60U1/U1P/U1E/U1MC
28	VYP9407	FRONT PANEL U	1	
29	VYQ8969	FAN PLATE U	1	
△ 30	K2CG3YY00168	AC CABLE	1	FOR AV-HS60U1/U2
△ 30	K2CG3YY00169	AC CABLE	1	FOR AV-HS60U1P/U2P
△ 30	K2CN3YY00021	AC CABLE	1	FOR AV-HS60U1E/U2E
△ 30	K2CT3YY00072	AC CABLE	1	FOR AV-HS60U1E/U2E
△ 30	K2CK3YY00081	AC CABLE	1	FOR AV-HS60U1MC/U2MC
31	VMPOJ28	REAR SUPPORT SWORD	2	
32	VMPOJ29	REAR SUPPORT SHEATH	2	
△ 33	VQF1T83	FAN BACK	1	FOR AV-HS60U1/U2
△ 33	VQT5J54	OPERATING INSTRUCTIONS	1	FOR AV-HS60U1P/E/U2P/E
△ 33	VQT5J56	OPERATING INSTRUCTIONS	1	FOR AV-HS60U1MC/U2MC
E1	VEB0919A	MOTHER U	1	
E2	VEB0920A	MAIN PROC U	1	
E3	VEP61366A	N FL P. C. BOARD	2	
E4	VEP63395A	SDI IN16 P. C. BOARD	2	
E5	VEP63396A	SDI OUT8 P. C. BOARD	2	
E6	VEP63397A	GPIO P. C. BOARD	1	

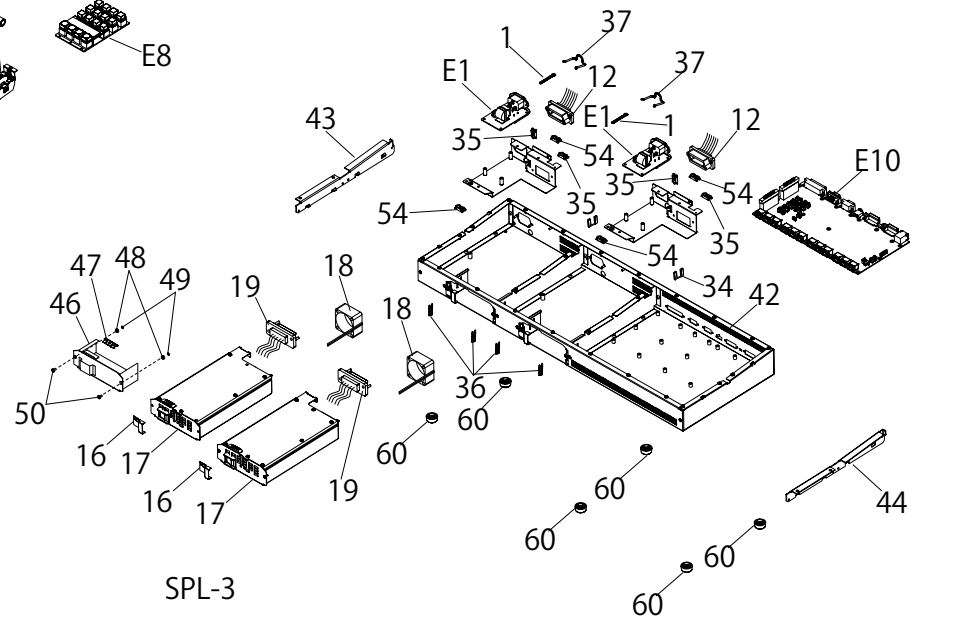
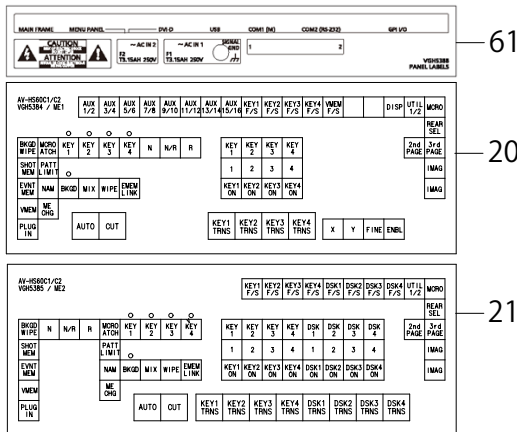
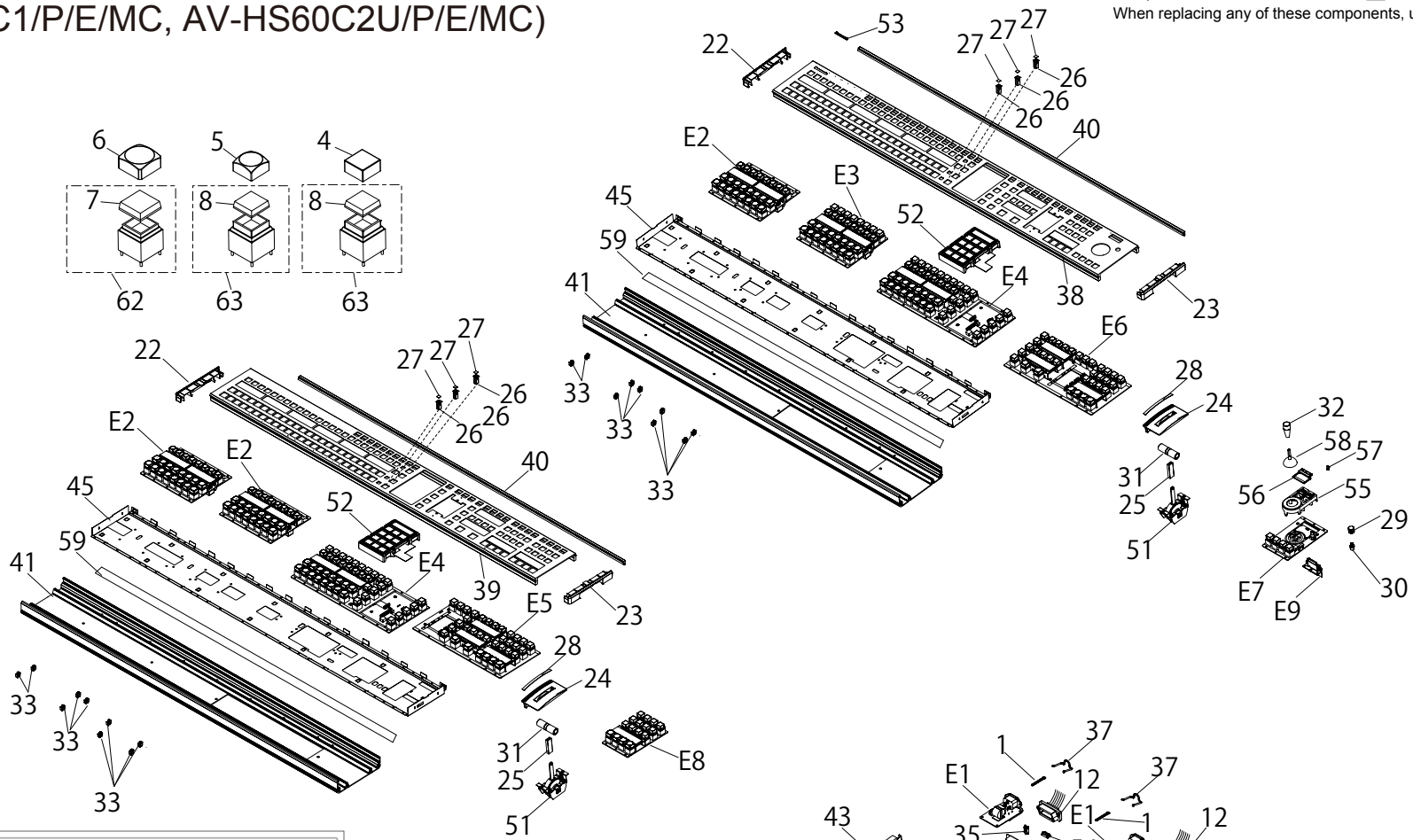
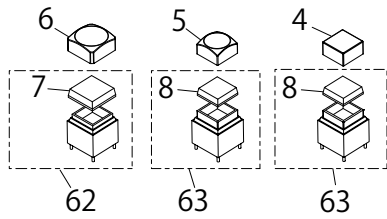
Ref.No.	Part No.	Part Name & Description	Pcs	Remarks
■ E1	VEB0919A	MOTHER U	1	
■ E2	VEB0920A	MAIN PROC U	1	
■ E3	VEP61366A	N FL P. C. BOARD	2	
■ E4	VEP63395A	SDI IN16 P. C. BOARD	2	
■ E5	VEP63396A	SDI OUT8 P. C. BOARD	2	
■ E6	VEP63397A	GPIO P. C. BOARD	1	
■ E2	VEB0920A	MAIN PROC U	1	
△	N4BCY50Y0003	BUTTON BATTERY	1	
△ F3002, 03	K5H402A00010	FUSE	2	
△ F3004	K5H162YA0034	FUSE	1	
△ F3005	K5H402A00010	FUSE	1	
△ F3006, 07	K5H162YA0034	FUSE	2	
△ PA2500	D4FB1R500007	VARI STOR	1	
△ PA3000	D4FB1R500007	VARI STOR	1	
△ PA3002	D4FB1R500007	VARI STOR	1	

Ref.No.	Part No.	Part Name & Description	Pcs	Remarks
■ E3	VEP61366A	N FL P. C. BOARD		
△ C1	F1BAH101A001	C. CAPACITOR 100P	1	
△ C2	ECQU2A224ML	P. CAPACITOR 100V 0.22U	1	
△ C3	F1BAH101A001	C. CAPACITOR 100P	1	
△ CN1	K2AH3H000012	AC INLET	1	
△ F1	K5D312BNA005	FUSE	1	
△ FH1	K3GA1YB00004	HOLDER	1	
△ LF1	G0B692H00001	COIL 6900UH	1	
△ R1	D0BF155JA044	M. RESISTOR 1/2W 1500K	1	
■ E4	VEP63395A	SDI IN16 P. C. BOARD		
△ F802	K5H162YA0034	FUSE	1	
△ F901	K5H162YA0034	FUSE	1	
■ E5	VEP63396A	SDI OUT8 P. C. BOARD		
△ F1500	K5H162YA0034	FUSE	1	
■ E6	VEP63397A	GPIO P. C. BOARD		
△ F401	K5H162YA0034	FUSE	1	
■	VEKOV24	POWER U		
△ C1003	ECQU2A474ML	P. CAPACITOR 100V 0.47U	1	
△ C1005, 06	F1BAH1020001	C. CAPACITOR 1000P	2	
△ C1007	ECQU2A474ML	P. CAPACITOR 100V 0.47U	1	
△ C1011	F0CZZ105A121	P. CAPACITOR 1U	1	
△ C1037	ECQE6473KF	P. CAPACITOR 630V 0.047U	1	
△ C1040	F1BAH1020001	C. CAPACITOR 1000P	1	
△ F1001	K5D252BNA005	FUSE	1	
△ LF1001	G0B692H00001	COIL 6900UH	1	
△ PC1001, 02	B3PAA0000308	PHOTO ISOLATION	1	
△ R1007	D0BF155JA044	M. RESISTOR 1/2W 1500K	1	
△ T1002	G4DYA0000576	TRANSFORMER	1	

FRAME PARTS ASSEMBLY

(AV-HS60C1/P/E/MC, AV-HS60C2U/P/E/MC)

Components identified with the mark have the special characteristics for safety. When replacing any of these components, use only the same type.




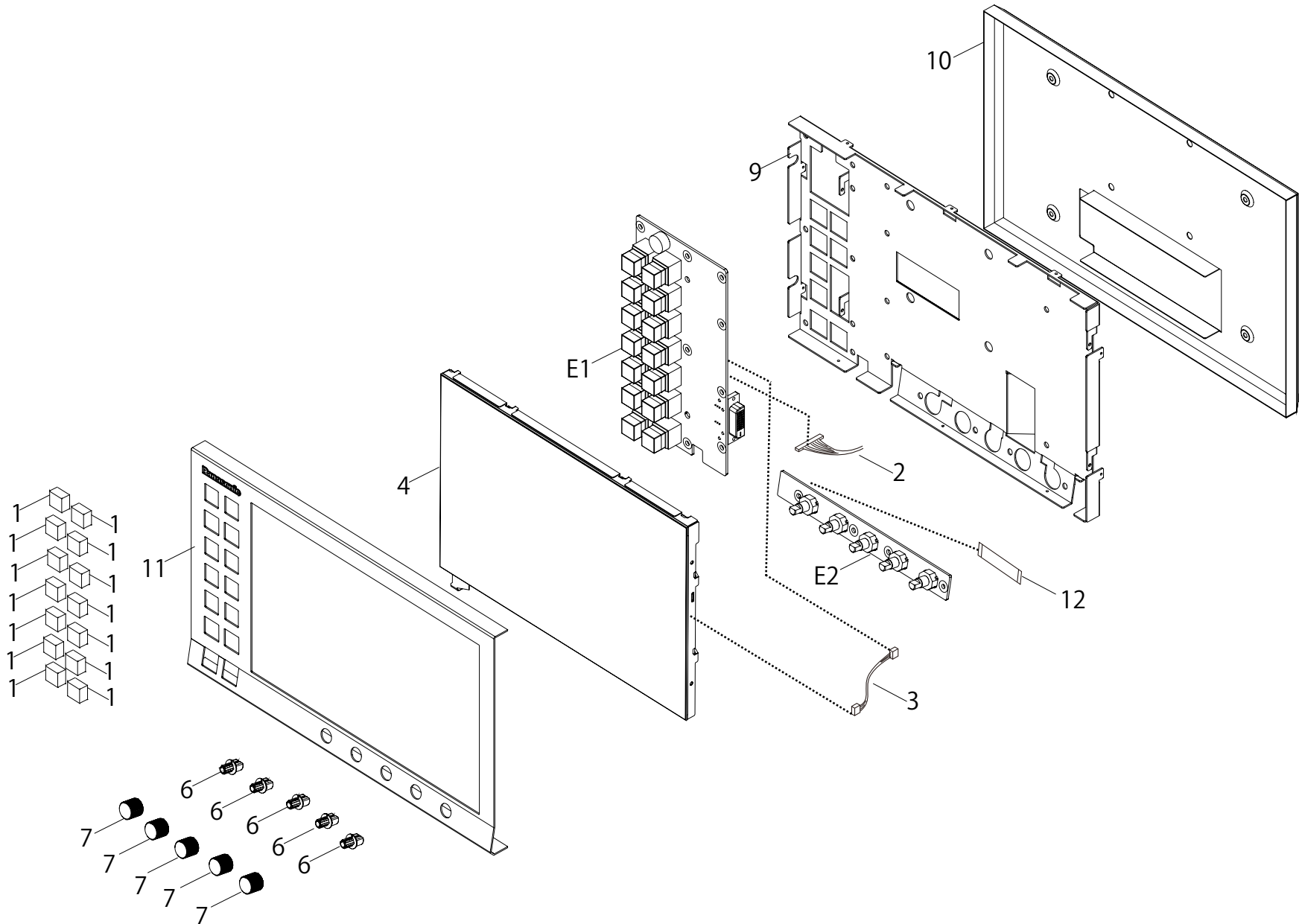
SPL-3

Ref.No.	Part No.	Part Name & Description	Pcs	Remarks
■ E1	VEP61366A	N FL P. C. BOARD	2	(RTL)
■ E2	VEP66507A	XPT EXT8 A P. C. BOARD	3	(RTL)
■ E3	VEP66507B	XPT EXT8 B P. C. BOARD	1	(RTL)
■ E4	VEP66508A	XPT BASE 8 P. C. BOARD	2	(RTL)
■ E5	VEP66509A	TRNS L P. C. BOARD	1	(RTL)
■ E6	VEP66510A	TRNS R P. C. BOARD	1	(RTL)
■ E7	VEP66511A	POS P. C. BOARD	1	(RTL)
■ E8	VEP66512A	DSK P. C. BOARD	1	(RTL)
■ E9	VEP66513A	SD CARD P. C. BOARD	1	(RTL)
■ E10	VEB0921A	PANEL MAIN U	1	(RTL)
■ E1	VEP61366A	N FL P. C. BOARD		
△ C1	F1BAH101A001	C. CAPACITOR 100P	1	
△ C2	ECQU2A224ML	P. CAPACITOR 100V 0.22U	1	
△ C3	F1BAH101A001	C. CAPACITOR 100P	1	
△ CN1	K2AH3H000012	AC INLET	1	
△ F1	K5D312BNA005	FUSE	1	
△ FH1	K3GA1YB00004	HOLDER	1	
△ LF1	G0B692H00001	C01L 6900UH	1	
△ R1	D0BF155JA044	M. RESISTOR 1/2W 1500K	1	
■ E2	VEP66507A	XPT EXT8 A P. C. BOARD		
△ F100	K5H202AA0010	FUSE	1	
△ F101	K5H162YA0034	FUSE	1	
△ PA100	D4FB1R500007	VARISTOR	1	
■ E3	VEP66507B	XPT EXT8 B P. C. BOARD		
△ F100	K5H202AA0010	FUSE	1	
△ F101	K5H162YA0034	FUSE	1	
△ PA100	D4FB1R500007	VARISTOR	1	
■ E4	VEP66508A	XPT BASE 8 P. C. BOARD		
△ F100	K5H402A00010	FUSE	1	
△ F102	K5H162YA0034	FUSE	1	
△ F300	K5H102AA0010	FUSE	1	
△ PA100	D4FB1R500007	VARISTOR	1	
■ E5	VEP66509A	TRNS L P. C. BOARD		
△ F100	K5H202AA0010	FUSE	1	
△ F102	K5H202AA0010	FUSE	1	
△ PA100	D4FB1R500007	VARISTOR	1	

Ref.No.	Part No.	Part Name & Description	Pcs	Remarks
■ E6	VEP66510A	TRNS R P. C. BOARD		
△ F100	K5H202AA0010	FUSE	1	
△ F102	K5H202AA0010	FUSE	1	
△ PA100	D4FB1R500007	VARISTOR	1	
■ E7	VEP66511A	POS P. C. BOARD		
△ PA1000	D4FB1R500007	VARISTOR	1	
■ E8	VEP66512A	DSK P. C. BOARD		
△ PA2000	D4FB1R500007	VARISTOR	1	
■ E10	VEB0921A	PANEL MAIN U		
△ F500	K5H162YA0034	FUSE	1	
△ F800	K5H402A00010	FUSE	1	
△ F801	K5H202AA0010	FUSE	1	
△ F802	K5H402A00010	FUSE	1	
△ F803	K5H202AA0010	FUSE	1	
△ F900, 01	K5H202AA0010	FUSE	2	
△ F1000	K5H162YA0034	FUSE	1	
△ PA400, 01	D4FB1R500007	VARISTOR	2	
△ PA403, 04	D4FB1R500007	VARISTOR	2	
△ PA500	D4FB1R500007	VARISTOR	1	
△ PA600, 01	D4FB1R500007	VARISTOR	2	
■ VEKOV24	POWER U			
△ C1003	ECQU2A474ML	P. CAPACITOR 100V 0.47U	1	
△ C1005, 06	F1BAH1020001	C. CAPACITOR 1000P	2	
△ C1007	ECQU2A474ML	P. CAPACITOR 100V 0.47U	1	
△ C1011	F0CZZ105A121	P. CAPACITOR 1U	1	
△ C1037	ECQE6473KF	P. CAPACITOR 630V 0.047U	1	
△ C1040	F1BAH1020001	C. CAPACITOR 1000P	1	
△ F1001	K5D252BNA005	FUSE	1	
△ LF1001	G0B692H00001	C01L 6900UH	1	
△ PC1001, 02	B3PAA0000308	PHOTO ISOLATION	1	
△ R1007	D0BF155JA044	M. RESISTOR 1/2W 1500K	1	
△ T1002	G4DYA0000576	TRANSFORMER	1	

FRAME PARTS ASSEMBLY (AV-HS60C3G/MC)

Components identified with the mark  have the special characteristics for safety.
When replacing any of these components, use only the same type.



Ref.No.	Part No.	Part Name & Description	Pcs	Remarks
1	KOYB0000060	SW COVER	14	
2	VEE1Q10	LCD SIGNAL CABLE	1	
3	VEE1Q11	LCD LED CABLE	1	
4	VEQ4625	TOUCH PANEL U	1	
5	VGH5386	SW LABELS MENU	1	
6	VGUOR58	KNOB BASE	5	
7	VGUOR59	KNOB TOP	5	
8	VMC2269	SHIELD FINGER M	11	
9	VMPOJ50	MENU CHASSIS	1	
10	VMPOJ51	REAR PANEL	1	
11	VYP9409	FRONT PANEL U	1	
12	VWJ20G6032L0	FLEXIBLE CABLE	1	
13	VYC1145	DVI CABLE U	1	
△ 14	VQT5J61	OPERATING INSTRUCTIONS	1	FOR AV-HS60C3G
△ 14	VQT5J62	OPERATING INSTRUCTIONS	1	FOR AV-HS60C3MC
E1	VEP66515A	MENU PANEL P. C. BOARD	1	
E2	VEP66516A	MENU SW P. C. BOARD	1	

Ref.No.	Part No.	Part Name & Description	Pcs	Remarks
■ E1	VEP66515A	MENU PANEL P. C. BOARD	1	
■ E2	VEP66516A	MENU SW P. C. BOARD	1	
■ E1	VEP66515A	MENU PANEL P. C. BOARD		
△ PA1000	D4FB1R500007	VARISTOR	1	