

SECTION 6

EXPLODED VIEWS & REPLACEMENT PARTS LIST

Model No. : **AW-UE70K/KP/KE/KMC**
AW-UE70W/WP/WE/WMC


Note:

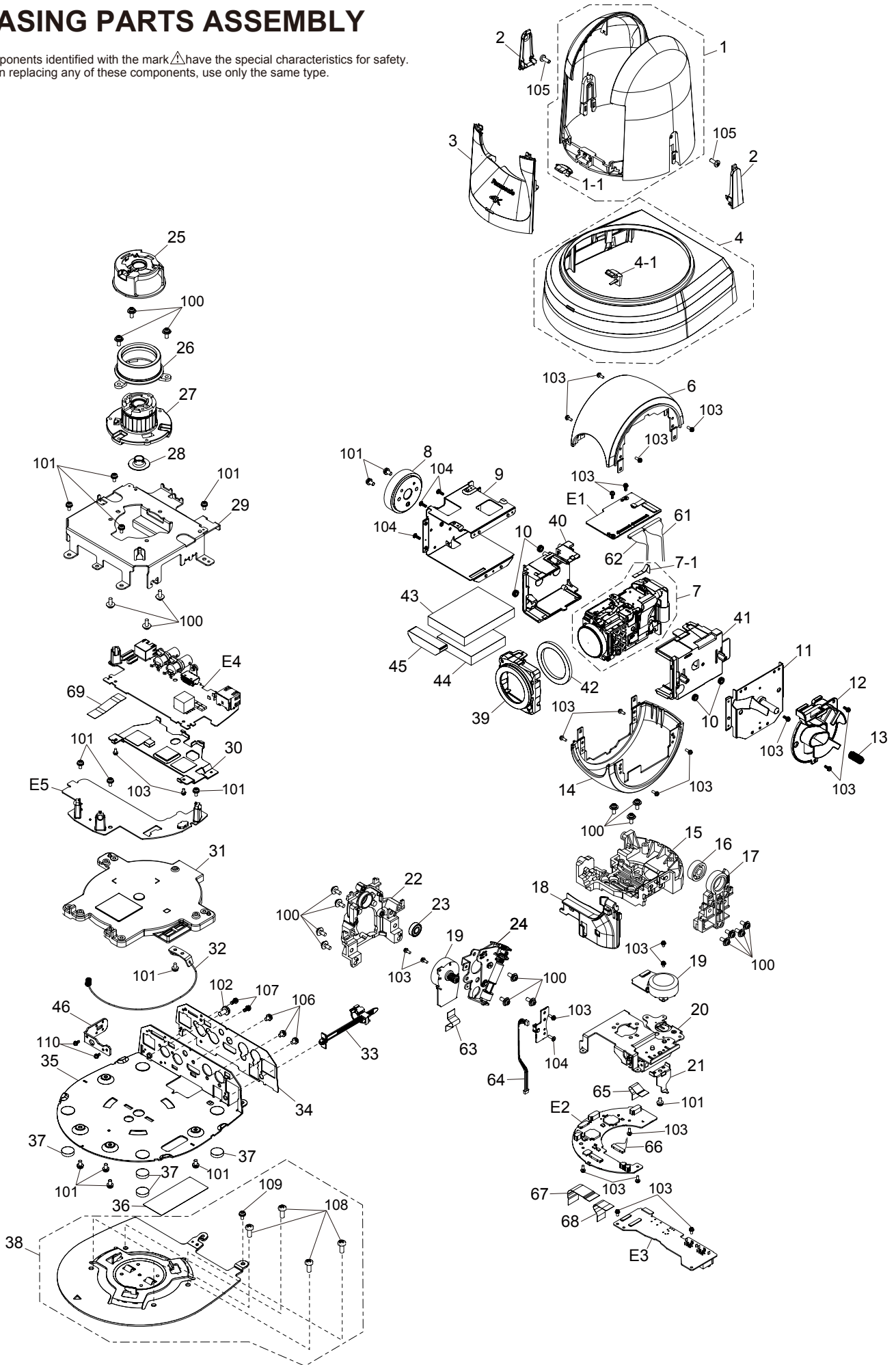
1. * Be sure to make your orders of replacement parts according to this list.
2. Unless otherwise specified, all resistors are in OHMS, K=1,000 OHMS, all capacitors are in MICROFARADS (uF), P=uuF.
3. The P.C.Board unit marked with "■" shown below the main assembled parts.
4. The parts marked with ⊕ on the exploded view show the electric parts.
5. IMPORTANT SAFETY NOTICE
Components identified with mark △ have the special characteristics for safety. When replacing any of these components, use only the same type.
6. The marking (RTL) indicates the retention time is limited for this item.
7. "M" in Remark column indicates needed in the periodical maintenance

CONTENTS

CASING PARTS ASSEMBLY	SPL-1
ELECTRICAL REPLACEMENT PARTS LIST	SPL-3

CASING PARTS ASSEMBLY

Components identified with the mark  have the special characteristics for safety. When replacing any of these components, use only the same type.



CASING PARTS ASSEMBLY

Ref. No.	Part No.	Part Name & Description	Pcs	Remarks
1	SYK0588-1	TOP CASE U	1	FOR AW-UE70K
1	SYK0565-1	TOP CASE U	1	FOR AW-UE70W
1-1	SGL0013-1	REC PANEL LIGHT	1	
2	SKK0197K	SCREW COVER	2	FOR AW-UE70K
2	SKK0197W	SCREW COVER	2	FOR AW-UE70W
3	SKK0314K	FRONT CASE	1	FOR AW-UE70K
3	SKK0314W	FRONT CASE	1	FOR AW-UE70W
4	SYK0587	BASE CASE U	1	FOR AW-UE70K
4	SYK0564	BASE CASE U	1	FOR AW-UE70W
4-1	SGL0012-1	POWER PANEL LIGHT	1	
6	SKK0199K	LENS CASE	2	FOR AW-UE70K
6	SKK0199W	LENS CASE	2	FOR AW-UE70W
7	SKW0280	CAMERA LENS U	1	
7-1	STJ0156	GYRO FPC	1	
8	VDG1861	TILT GEAR	1	
9	SYG0153	LENS FRAME L U	1	
10	VMG1925	DUMPER RUBBER	4	
11	SYG0156	LENS FRAME R U	1	
12	VGG1U74	LENS WIRE HOLDER A	1	
13	VMB4836	TILT SHAFT SPRING	1	
15	3CB004110BAA	PAN CHASSIS	1	
16	VDB1791	TILT ALIGNMENT BEARING	1	
17	3CB004109AAA	TILT CHASSIS A	1	
18	VGG1U76	LENS WIRE HOLDER B	1	
19	VXQ2568	MOTOR U	2	
20	VXQ2572	PAN GEAR ASSY	1	
21	VMPK64	PAN STOPPER	1	
22	VGG1U77	TILT CHASSIS B2	1	
23	VDB1792	TILT BEARING	1	
24	VXQ2580	TILT GEAR_ASSY	1	
25	VGG1U75	PAN GEAR COVER	1	
26	3FF001048BAA	PAN GEAR	1	
27	VXD0679	PAN BEARING ASSY	1	
28	VGG1U80	PAN WIRE COVER	1	
29	SYQ0321	MECHA FRAME (1) U	1	
30	SYQ0585	COOLING PLATE U	1	
31	3CC002194FAA	TRIPOD FRAME	1	
32	V5YA0527BN	LOCK WIRE ASSY	1	
33	VJF1608	CABLE CLAMP	1	
34	SKN0031K-M	PANEL SHEET	1	
35	SGF0041-1M	BOTTOM PLATE	1	
36	SQL0322	DIP SW LABEL	1	
37	SKA0014K	SET LEG CUSHION	4	
38	SYQ0573	CEILING MOUNTING PLATE U	1	
39	VMPK94	LENS HOLDER F	1	
40	VMPK92	LENS HOLDER L	1	
41	VMPK93	LENS HOLDER R	1	
42	SGD0660	DUST PROTECTOR RING	1	
43	SMT0162	SOUND PROOF CUSHION A	1	
44	SMT0163	SOUND PROOF CUSHION B	1	
45	SMT0166	SOUND PROOF CUSHION C	1	
46	SGF0061-M	SECURITY PLATE	1	

Ref. No.	Part No.	Part Name & Description	Pcs	Remarks
61	STK0010E	MOS WIRE (40P)	1	
62	STK0011E	LENS WIRE (30P)	1	
63	STJ0077	MOTOR FFC	2	
64	SEE0072	TILT SENSOR WIRE	1	
66	STK0012E	SERVO WIRE (20P)	1	
67	STJ0064	JACK FFC	1	
68	STJ0063	JACK FPC	1	
69	STJ0065	REMOTE FFC	1	
100	XYN3+F8FJ	SCREW	20	
101	XYN3+J6FJ	SCREW	15	
102	XYM4+E8V	SCREW	1	
103	XYN2+J6FJ	SCREW	23	
104	XTB2+6GFJ	SCREW	4	
105	XTB3+8GFJ	SCREW	2	
106	XYN3+J5FJK	SCREW	3	
107	XYN26+J6FJK	SCREW	1	
108	XSB4+10FJ	SCREW	4	
109	XYN3+J6FN	SCREW	1	
110	XYN2+J5FN	SCREW	2	
E1	SEP0278AA	CAM RELAY P. C. BOARD	1	
E2	SEP0254AA	SERVO P. C. BOARD	1	
E3	SEP0253AA-S	JACK P. C. BOARD	1	
E4	SEP0535AA-S	MAIN P. C. BOARD	1	
E5	SEP0255AA-S	REMOTE P. C. BOARD	1	
E6	SEP0257AA	TILT SENSOR P. C. BOARD	1	

Components identified with the mark Δ have the special characteristics for safety
When replacing any of these components, use only the same type.

PACKING PARTS ASSEMBLY

Ref.No.	Part No.	Part Name & Description	Pcs	Remarks
	SAE0011BA	AC ADAPTOR	1	
	SYQ0573	CEILING MOUNTING PLATE U	1	
△	K2G02YY00119	AC POWER CORD	1	FOR AW-UE70*EJ
△	K2CP2YY00070	AC POWER CORD	1	FOR AW-UE70*EJ
△	K2GT2CA00007	AC POWER CORD	1	FOR AW-UE70*/*PJ/*EJ/*MC
△	K2CA2CA00025	AC POWER CORD	1	FOR AW-UE70*PJ
△	K2GA2YY00215	AC POWER CORD	1	FOR AW-UE70*MC

Ref.No.	Part No.	Part Name & Description	Pcs	Remarks
	SPG0529	PACKING CASE (IN)	1	FOR AW-UE70*/*PJ/*EJ
	SPG0530	PACKING CASE (OUT)	1	FOR AW-UE70*PJ/*EJ
	SPG0492	PACKING CASE (IN)	1	FOR AW-UE70*MC
	SPG0531	PACKING CASE (OUT)	1	FOR AW-UE70*MC
	SPN0347	CUSHION TOP	1	
	SPN0348	CUSHION BOTTOM	1	

ELECTRICAL REPLACEMENT PARTS LIST

Ref.No.	Part No.	Part Name & Description	Pcs	Remarks
■ E1	SEP0278AA	CAM RELAY P. C. BOARD	1	
■ E2	SEP0254AA	SERVO P. C. BOARD	1	
■ E3	SEP0253AA-S	JACK P. C. BOARD	1	
■ E4	SEP0535AA-S	MAIN P. C. BOARD	1	
■ E5	SEP0255AA-S	REMOTE P. C. BOARD	1	
■ E6	SEP0257AA	TILT SENSOR P. C. BOARD	1	

Ref.No.	Part No.	Part Name & Description	Pcs	Remarks
■ E1	SEP0535AA-S	MAIN P. C. BOARD	1	
△ R2301	D1JB2R70A023	RESISTOR	1	
△ R1601	D1JBR084A023	RESISTOR	1	
△ IP6001	ERBRD4R00X	FUSE	1	
△ IP6002	K5H102YA0065	FUSE	1	
△ IP6003	K5H102YA0065	FUSE	1	
JK6004	K2LC1YYB0028	LAN CONNECTOR	1	
JK6002	K2EZ2B000029	DC IN CONNECTOR	1	
JK6003	K1FY119E0025	HDMI CONNECTOR	1	
JK3602	K2LC108B0039	RS422 CONNECTOR	1	
JK3001, 2	K1QYY1YB0090	SDI OUT CONNECTOR	2	
■ E5	SEP0255AA-S	REMOTE P. C. BOARD	1	
△ B6301	N4ECY14Y0004	SMALL SECONDARY BATTERIES	1	
■ E3	SEP0253AA-S	JACK P. C. BOARD	1	
JK3901	K1CB208BA002	RS232C IN CONNECTOR	1	
JK3902	K1CB208BA002	RS232C OUT CONNECTOR	1	
JK4901	K2HC106E0009	AUDIO IN CONNECTOR	1	
JK3903	K2HZ105E0011	USB CONNECTOR	1	

Components identified with the mark △ have the special characteristics for safety. When replacing any of these components, use only the same type.